

PROPOSED  
scale 1\_100

OFFICE & RESIDENTIAL  
DEVELOPMENT  
382 WINCHESTER ROAD  
SOUTHAMPTON

**Barron & Partners**  
CONSULTING CIVIL AND STRUCTURAL ENGINEERS  
PLANNING SUPERVISORS

382 Winchester Road, Bassett, Southampton, SO16 7DH  
Tel: (023) 8070 6155, Fax: (023) 8070 4333  
Email: [admin@barron-and-partners.co.uk](mailto:admin@barron-and-partners.co.uk)  
Web: <http://www.barron-and-partners.co.uk>

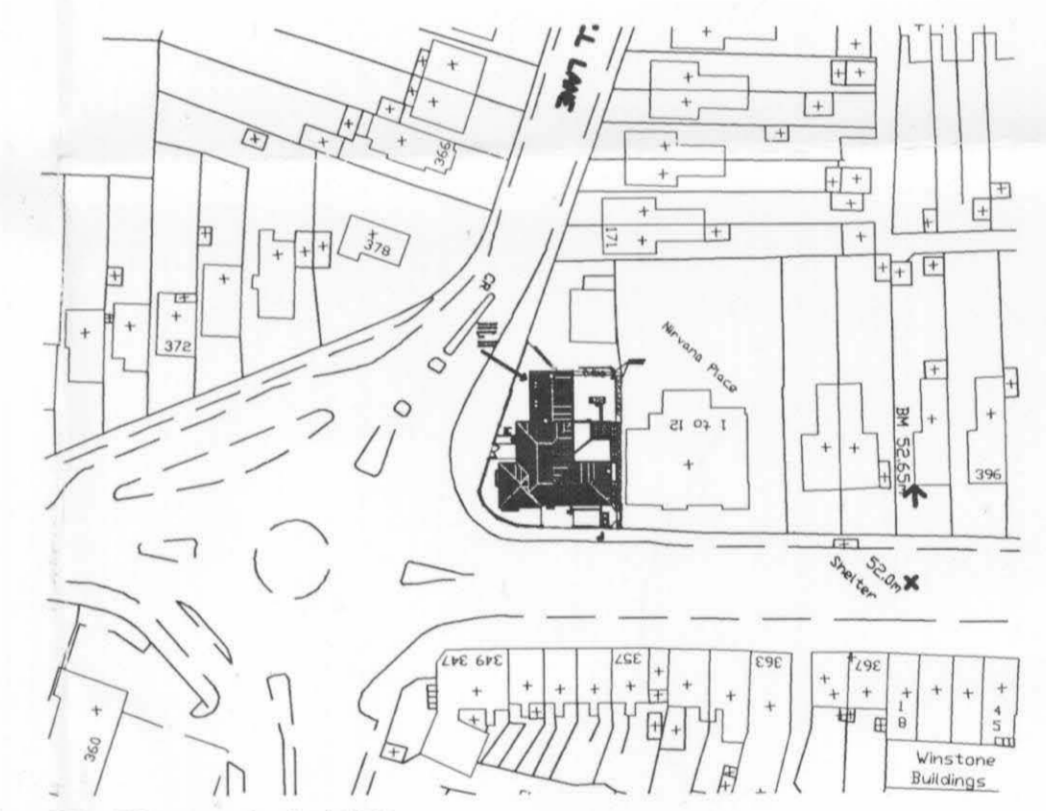
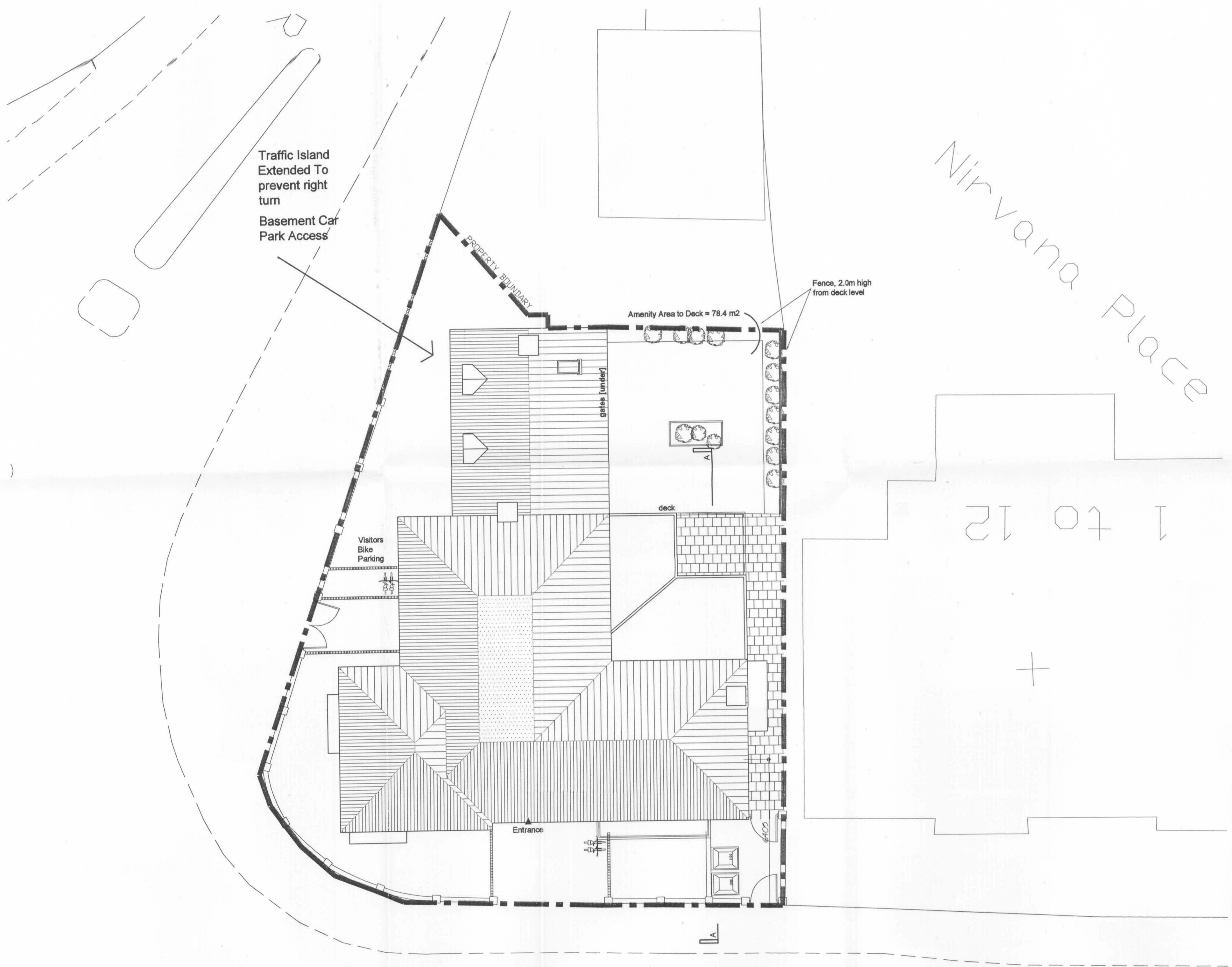
Drawing.No. 04010/001revB

PLANNING & SUBMITTAL  
21 NOV 2007  
DIVISION

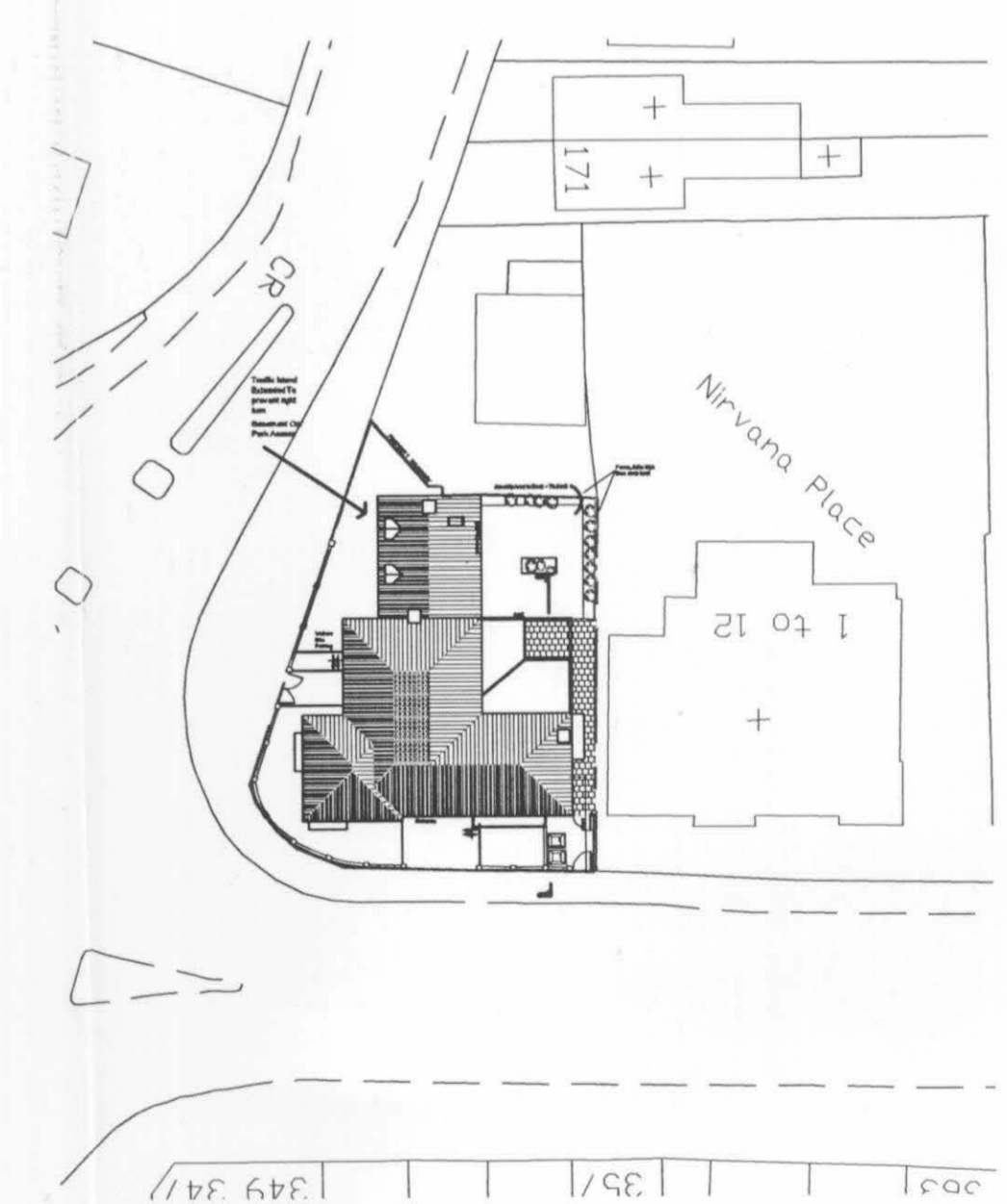
APPROVED PLAN  
APP. NO. 07/01624/f0L



Amenity space to development  
Total = 165 m2 including balconies  
= 20 m2 per flat



Site Plan scale 1\_1250



Block Plan scale 1\_500

Site Plan scale 1\_100

PROPOSED  
scale 1\_100

OFFICE & RESIDENTIAL  
DEVELOPMENT  
382 WINCHESTER ROAD  
SOUTHAMPTON

**Barron & Partners**  
CONSULTING CIVIL AND STRUCTURAL ENGINEERS  
PLANNING SUPERVISORS

382 Winchester Road, Bassett, Southampton, SO16 7DH  
Tel: (023) 8070 5155, Fax: (023) 8070 4333  
E-mail: admin@barron-and-partners.co.uk  
Web: http://www.barron-and-partners.co.uk

Drawing.No. 04010/002rev B



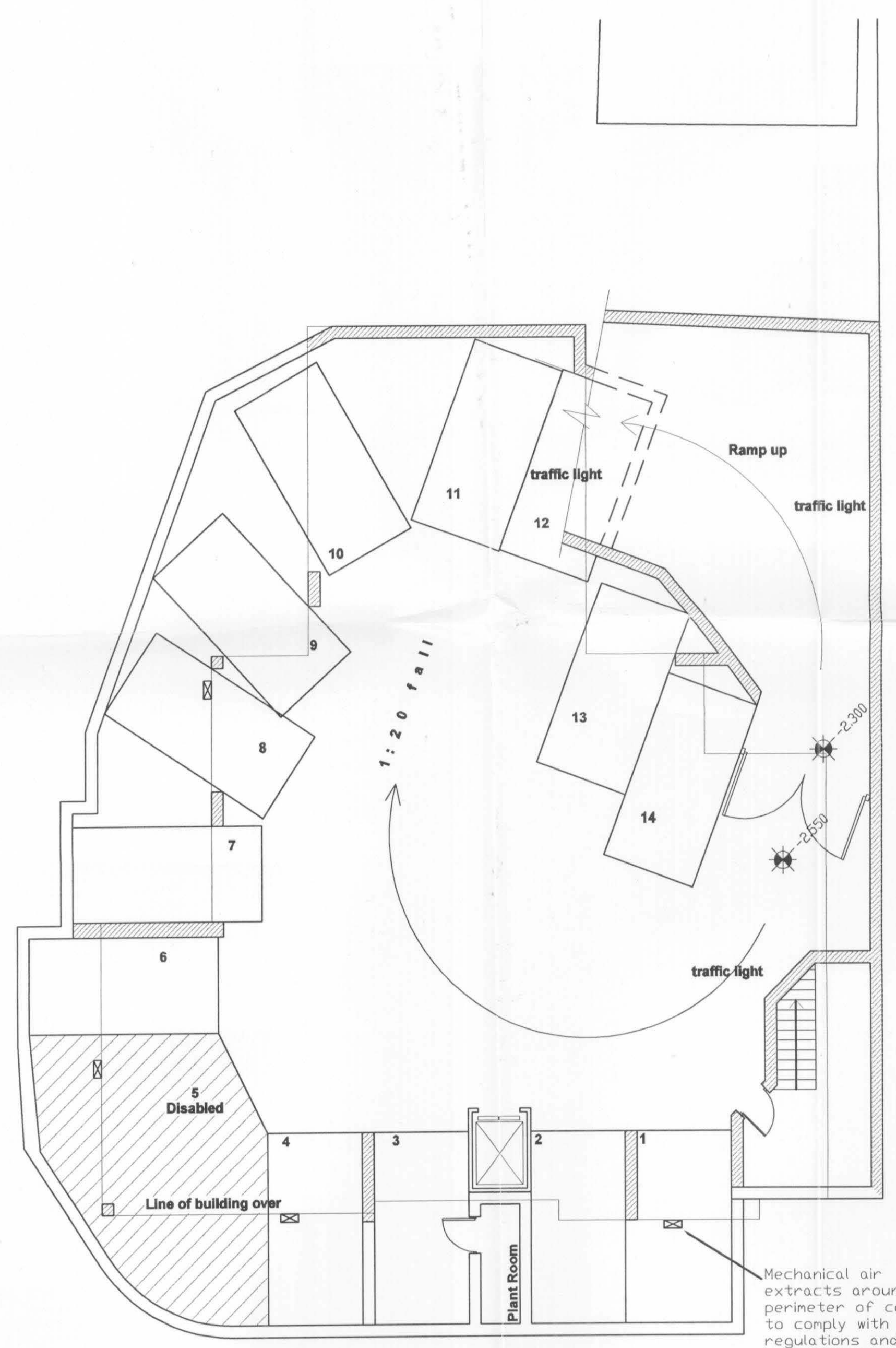
APPROVED PLAN  
APP. NO. 07/01624/ful

CAR PARK TRAFFIC CONTROL SYSTEM

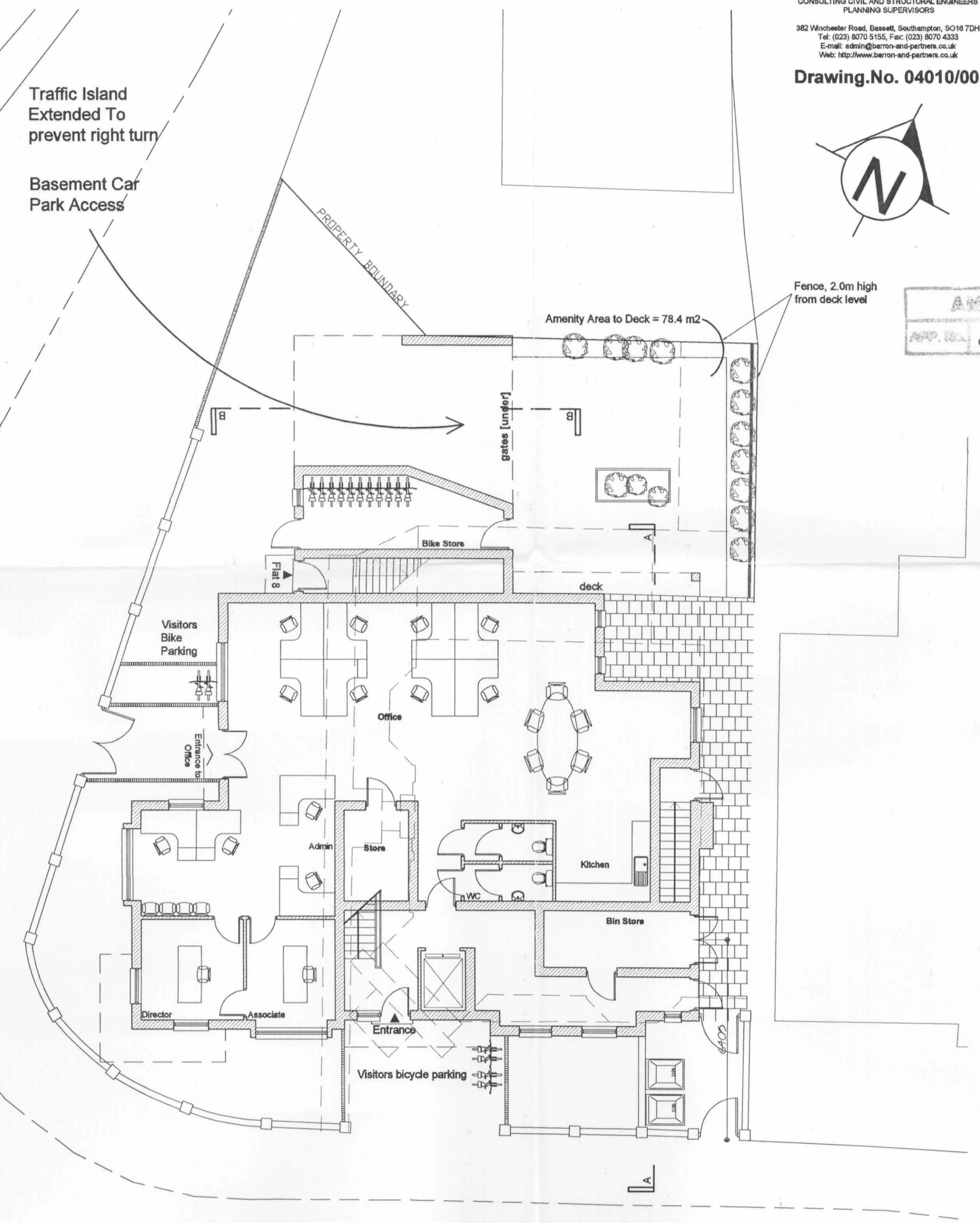
DETECTOR LOOPS ARE TO BE INSTALLED AT THE TOP OF THE RAMP AND IN THE MANEUVERING SPACE IN THE UNDERGROUND CAR PARK. THESE ARE TO BE INTERCONNECTED TO A TRAFFIC LIGHT AND SECURITY GATE SYSTEM AT THE TOP OF THE RAMP AND TRAFFIC LIGHTS IN THE UNDERGROUND CAR PARK.

IF A VEHICLE ENTERS THE TOP OF THE RAMP THEN THE LIGHT SYSTEM IN THE UNDERGROUND CAR PARK WILL SHOW RED, THUS WARNING VEHICLES NOT TO LEAVE THEIR PARKING SPACE UNTIL THE VEHICLE ON THE RAMP HAS ENTERED THE UNDERGROUND CAR PARK. THE SECURITY GATE WILL AUTOMATICALLY OPEN AS THE VEHICLE ENTERS THE RAMP AREA.

SHOULD A VEHICLE LEAVE A PARKING SPACE THEN THE LIGHTS AT THE TOP OF THE RAMP WILL SHOW RED. THE SECURITY GATE WILL ALSO REMAIN CLOSED, THUS PREVENTING VEHICLES ENTERING THE CAR PARK UNTIL THE VEHICLE FROM BELOW HAS CLEARED THE RAMP. THERE IS SPACE AT THE TOP OF THE RAMP FOR TWO VEHICLES TO PULL OFF THE ROAD WHILST WAITING TO ENTER THE CAR PARK.



Basement Plan scale 1\_100



Ground Floor Plan scale 1\_100

PROPOSED  
scale 1\_100

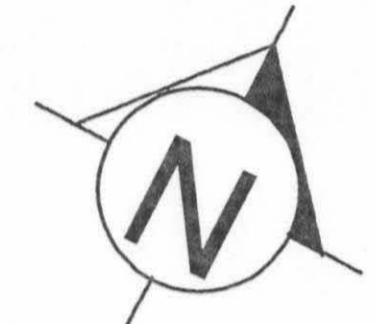
OFFICE & RESIDENTIAL  
DEVELOPMENT  
382 WINCHESTER ROAD  
SOUTHAMPTON

**Barron & Partners**

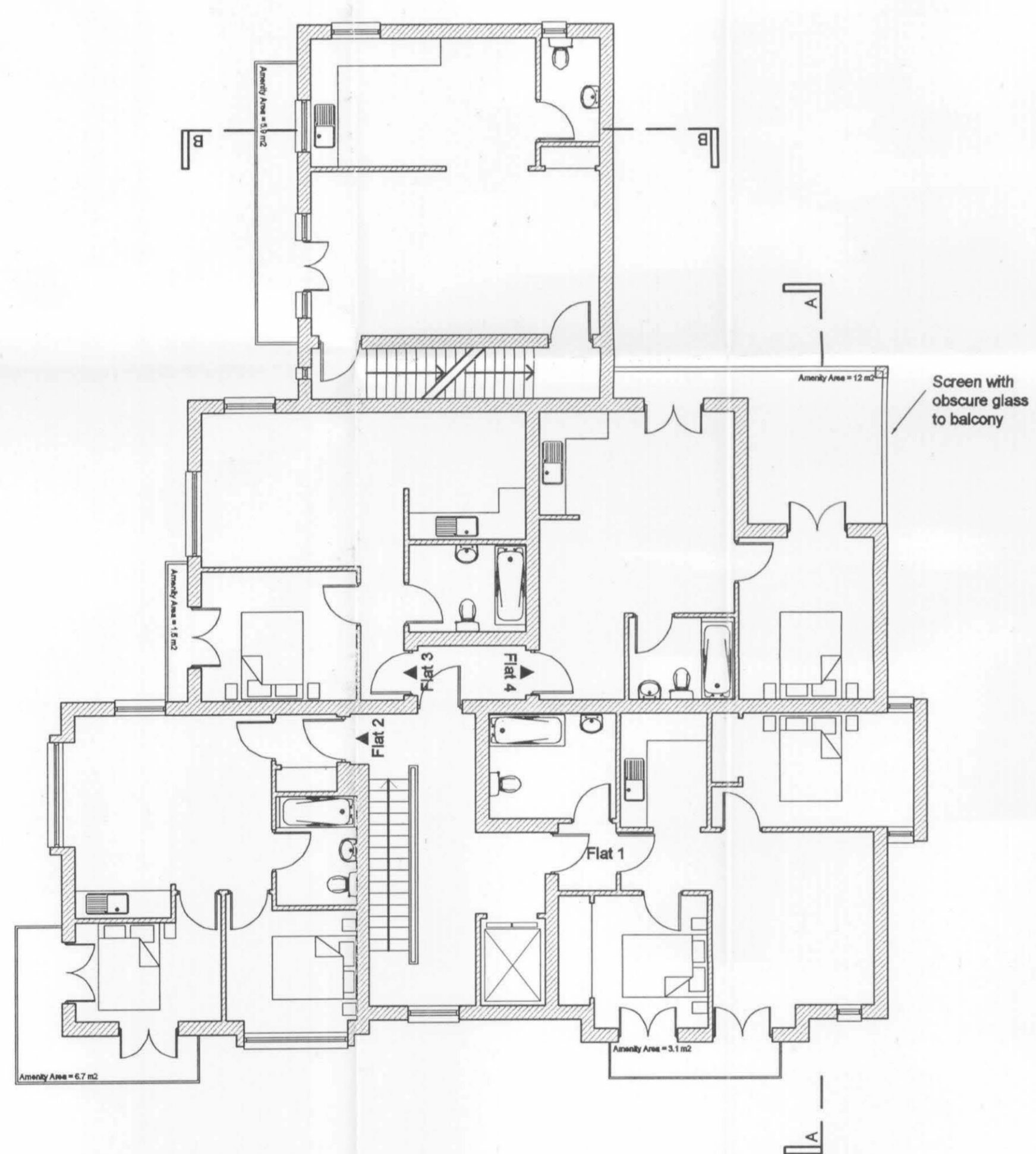
CONSULTING CIVIL AND STRUCTURAL ENGINEERS  
PLANNING SUPERVISORS

382 Winchester Road, Bassett, Southampton, SO16 7DH  
Tel: (023) 8070 0100; Fax: (023) 8070 4333  
E-mail: admin@barron-and-partners.co.uk  
Web: http://www.barron-and-partners.co.uk

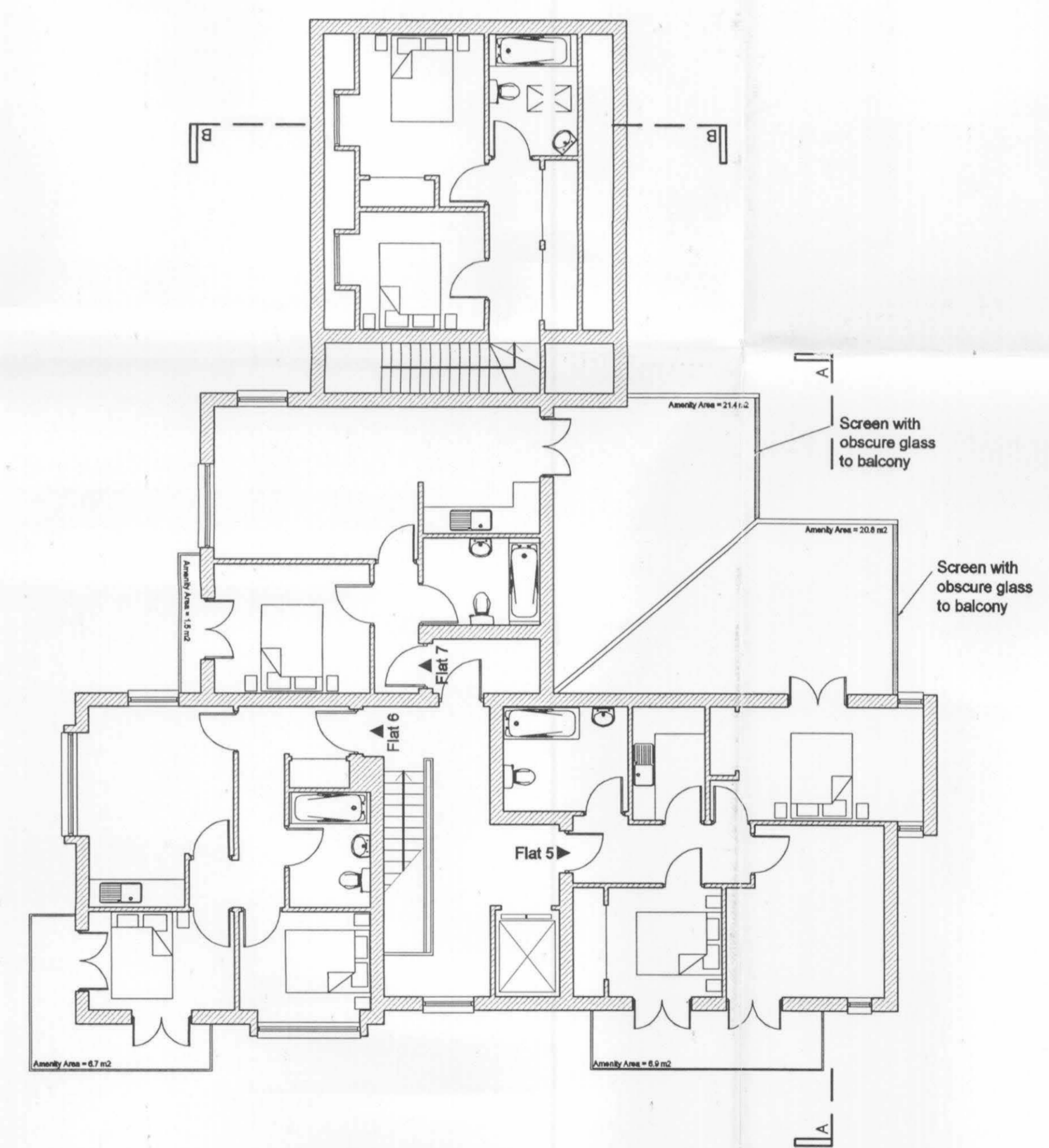
Drawing No. 04010/003revB



ARCHITECTURAL  
APP. NO. 07/01624 /FUL



First Floor scale 1\_100



Second Floor Plan scale 1\_100



Section BB scale 1\_100

PLANNING & STRUCTURAL DIVISION  
21 NOV 2007  
DIVISION

APPROVED PLAN  
APP. NO. 07/01624 /FUL



Winchester Road scale 1\_100



Hill Lane scale 1\_100

171 Winchester Road

Proposed Development

Winchester Road

PROPOSED  
scale 1\_100

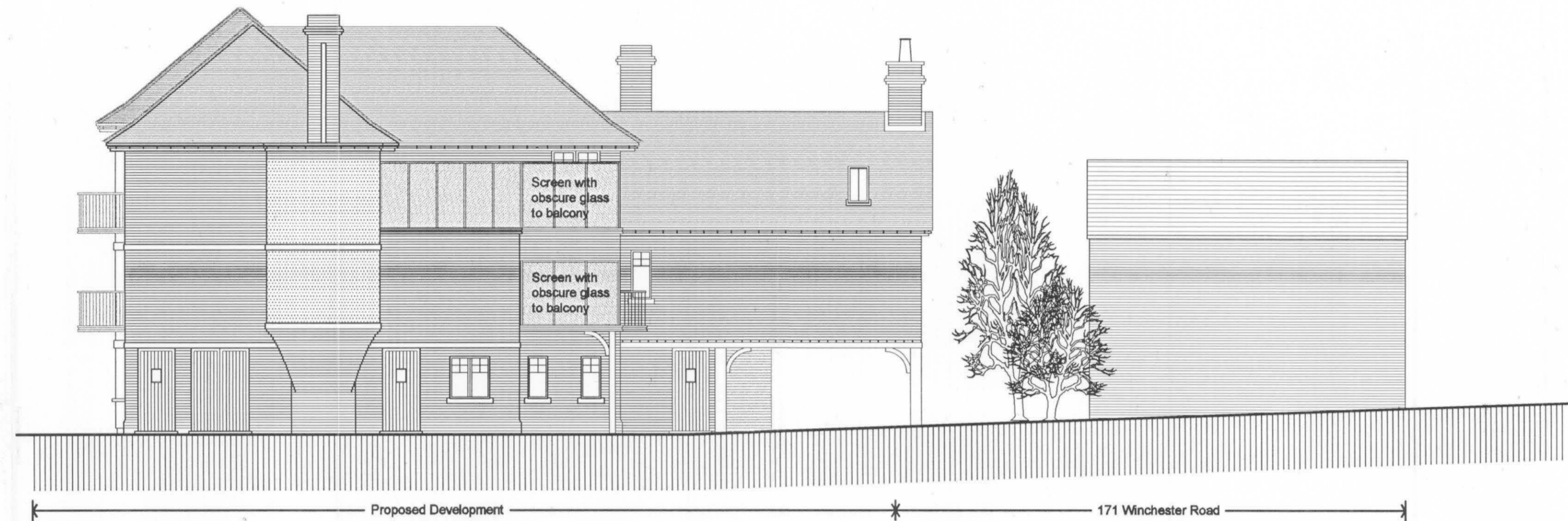
OFFICE & RESIDENTIAL  
DEVELOPMENT  
382 WINCHESTER ROAD  
SOUTHAMPTON

**Barron & Partners**

CONSULTING CIVIL AND STRUCTURAL ENGINEERS  
PLANNING SUPERVISORS

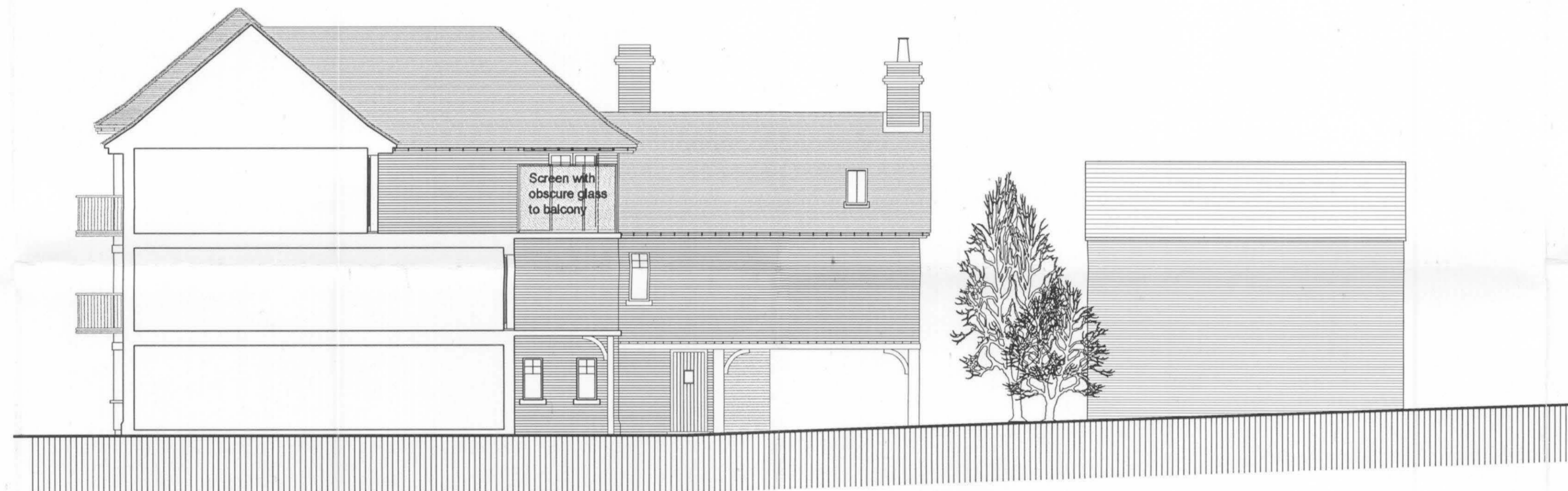
382 Winchester Road, Bassett, Southampton, SO18 7DH  
Tel: (023) 8070 5155, Fax: (023) 8070 4333  
E-mail: admin@barron-and-partners.co.uk  
Web: http://www.barron-and-partners.co.uk

Drawing No. 04010/005revB



North East Elevation scale 1\_100

PLANNING & CITY VITALITY  
21 NOV 2007  
DORSET



Section AA scale 1\_100

APPROVED PLAN  
07/01624/fuc



North West scale 1\_100